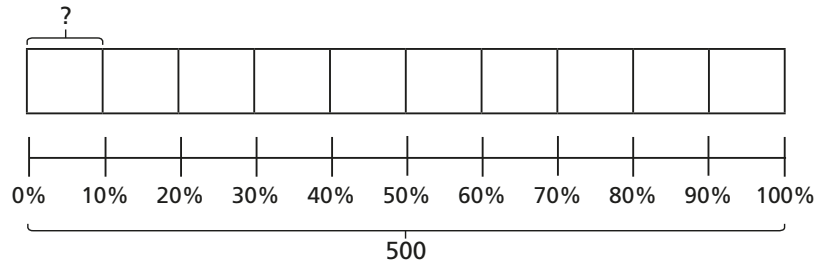


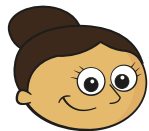
1 a) Use the bar model to find 10% of 500



b) Use your answer to part a) to help you work out the calculations.

- | | |
|------------|-------------|
| 20% of 500 | 70% of 500 |
| 90% of 500 | 60% of 500 |
| 30% of 500 | 100% of 500 |

2



To find 5% you can find 10% and then halve it.

Use Dora's method to work out the calculations.

- | | |
|----------------|----------------|
| a) 5% of 40 | d) 5% of 2,000 |
| b) 5% of 400 | e) 5% of 6,000 |
| c) 5% of 4,000 | |

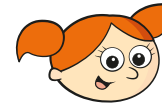
What do you notice about your answers?

3 Some children are asked to find 75% of 340



I will find 25% and multiply it by 3

a) Use Dexter's method to find 75% of 340



I will find 10% and multiply it by 7, then find 5% and add them together.

b) Use Alex's method to find 75% of 340



I will find 25% and 50% and add them together.

c) Use Amir's method to find 75% of 340

d) Are there any other methods you could use?

4 Talk to a partner about different methods for finding these percentages.

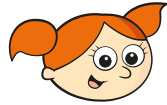
20% 90% 60% 15% 55% 40%

Use your preferred method to calculate the percentages.

- | | | |
|-----------------|-----------------|-----------------|
| a) 20% of 1,000 | c) 60% of 1,000 | e) 55% of 1,000 |
| 20% of 550 | 60% of 400 | 55% of 4,400 |
| 20% of 40 | 60% of 98 | 55% of 8 |
| b) 90% of 1,000 | d) 15% of 1,000 | f) 40% of 1,000 |
| 90% of 4,230 | 15% of 300 | 40% of 400 |
| 90% of 90 | 15% of 30 | 40% of 98 |



a) Use Dexter's method to find 75% of 340



I will find 10% and multiply it by 7, then find 5% and add them together.

b) Use Alex's method to find 75% of 340



I will find 25% and 50% and add them together.

c) Use Amir's method to find 75% of 340

d) Are there any other methods you could use?

4 Talk to a partner about different methods for finding these percentages.

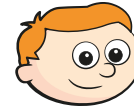
20% 90% 60% 15% 55% 40%

Use your preferred method to calculate the percentages.

- | | | |
|-----------------|-----------------|-----------------|
| a) 20% of 1,000 | c) 60% of 1,000 | e) 55% of 1,000 |
| 20% of 550 | 60% of 400 | 55% of 4,400 |
| 20% of 40 | 60% of 98 | 55% of 8 |
| b) 90% of 1,000 | d) 15% of 1,000 | f) 40% of 1,000 |
| 90% of 4,230 | 15% of 300 | 40% of 400 |
| 90% of 90 | 15% of 30 | 40% of 98 |

5 Ron is calculating these percentages.

10% of 20 20% of 10



20% is double 10%, and 10 is half of 20, so I know these will both have the same answer.

How does Ron know this?

6 a) Work out the calculations.

20% of 40 25% of 60

40% of 20 60% of 25

b) What do you notice about the answers?

c) Does this always happen? Investigate with other examples.

d) Talk about your findings with a partner.