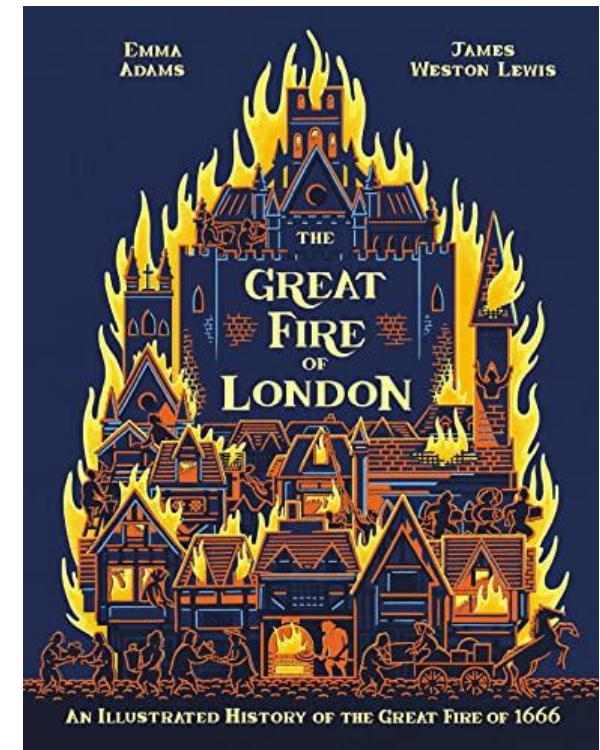




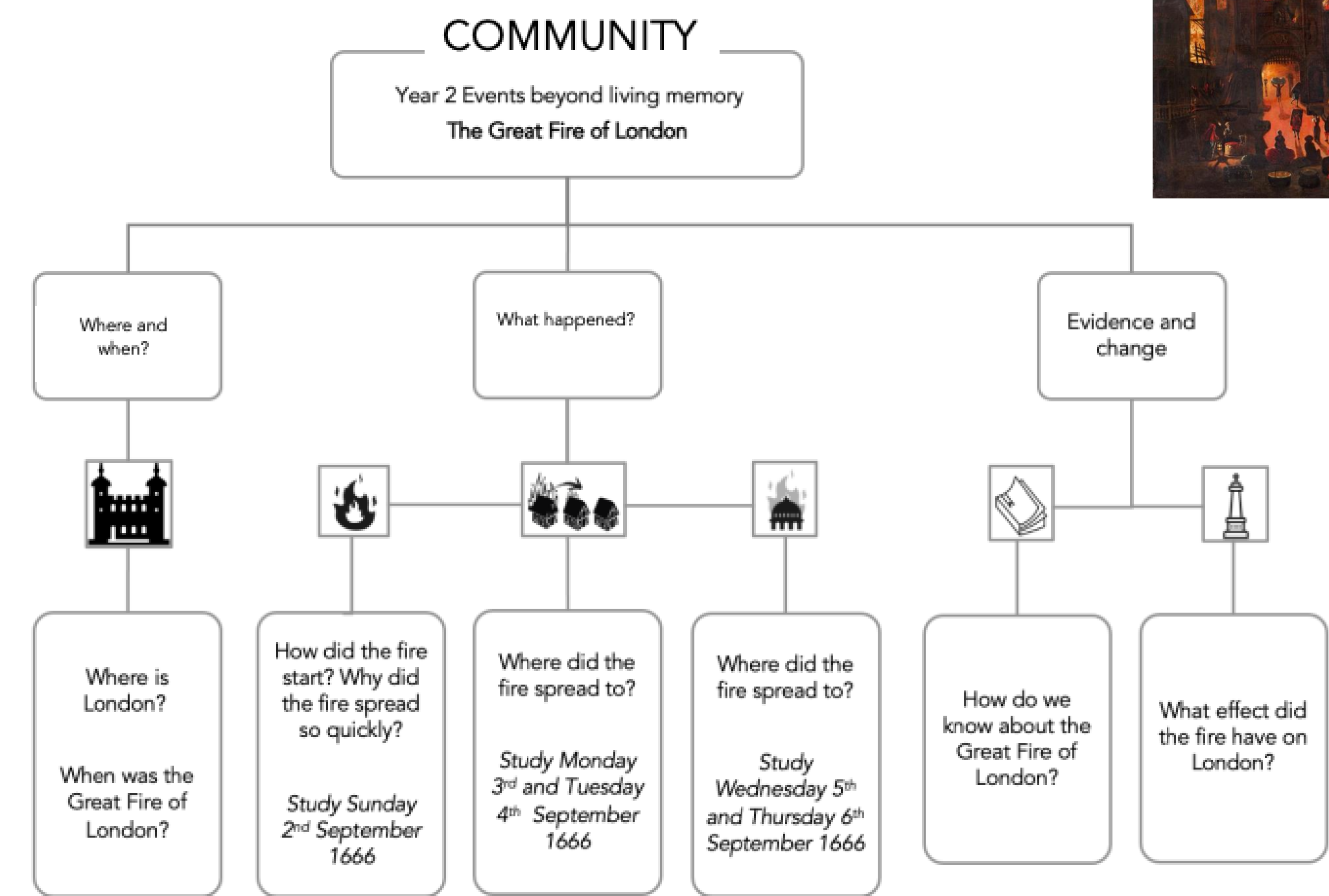
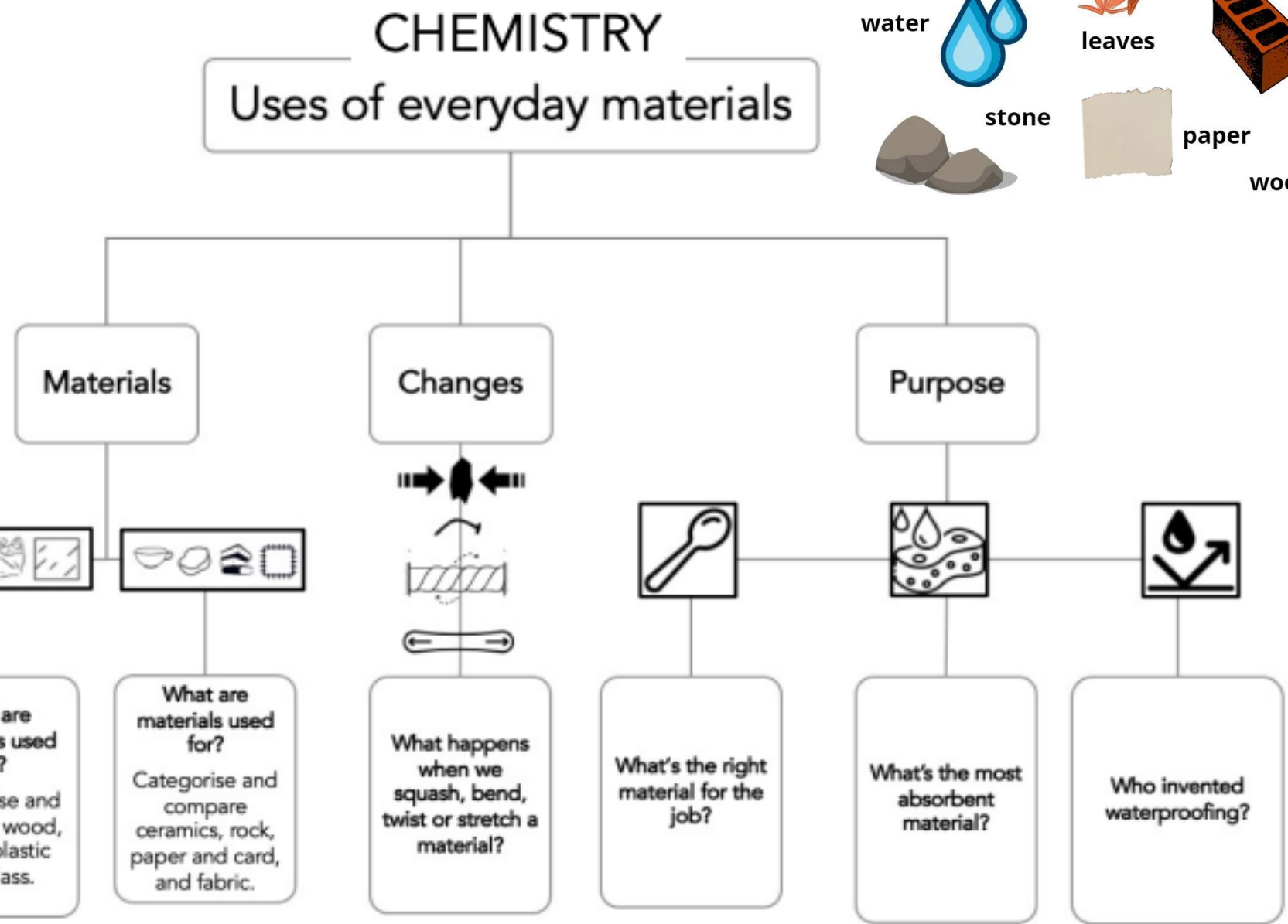
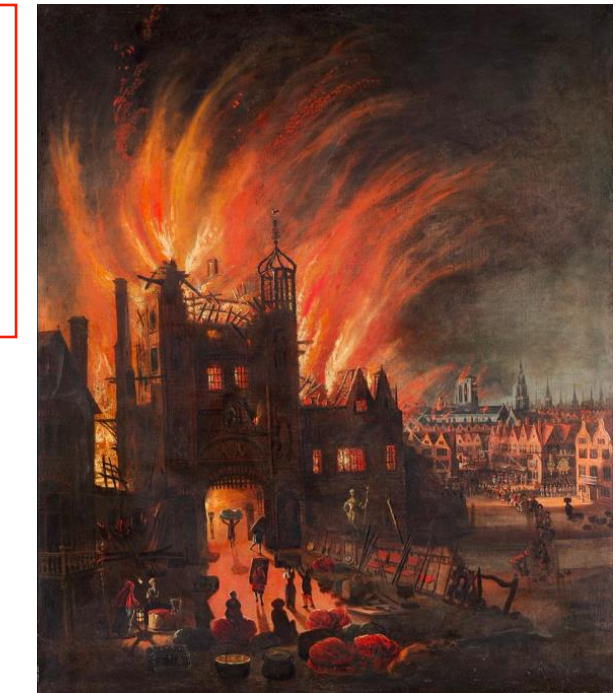
Vocabulary
manufactured
natural
rigid
translucent
bustling
extinguished
engulfed
flammable
vitamins
senses
caramelize
marinate

In Writing we will be producing a dairy focused on the Great Fire of London.

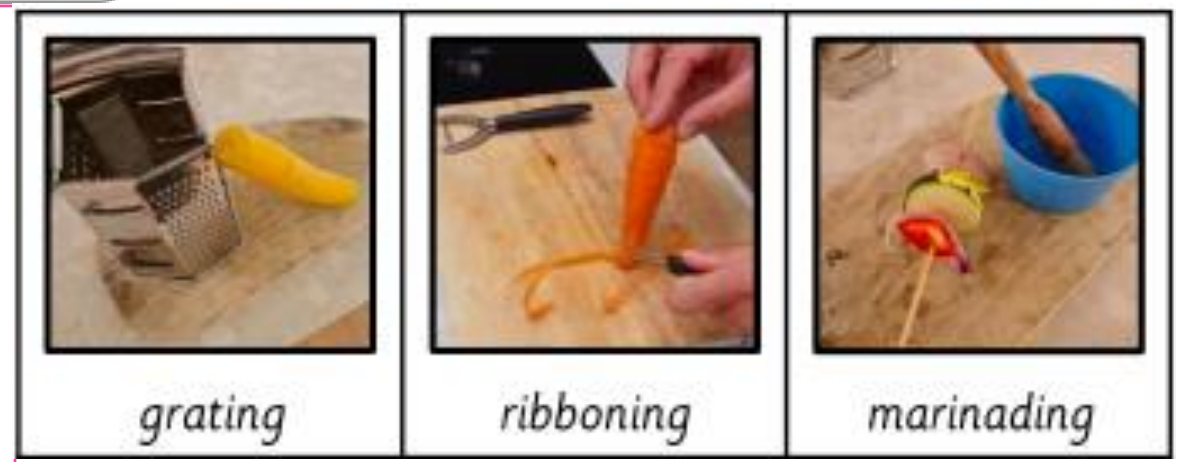
In Science we will be learning about materials. We will be considering what materials are and what they are used for and made from. We will also be learning about materials changes, properties and purposes.



In History we will be learning about The Great Fire of London. We finding out how the fire started, why it spread so quickly and where it spread to. We will also be exploring how we know about the Great Fire of London hundreds of years later.



In DT, we will be focusing on Food and Nutrition and finding the answer to the question: How does food affect your sense? We will be peeling, chopping and grating a selection of vegetables and modifying foods to suit our senses.



In RE we will have a Judaism focus. We will be exploring the question: 'Why is learning to do good deeds important to Jewish people?' We will engage with the concept of Mitzvot, enquire into how Mitzvot make Jewish people feel they belong to God and Explore Mitzvot in a bible story, the mitzvah of welcoming a baby girl in the synagogue, and the idea of Tikkun Olam in Jewish living.



In ICT we will be learning about online safety focusing on relationships and reputation online.



KS1 Why is learning to do good deeds so important to Jewish people?

What should we know?
Mitzvah is the Jewish word for good deed or action. It is something God asks all Jews to do.
 Jews believe it's a mitzvah (good deed) to:

- **HELP** others in need.
- **WELCOME** others.
- **GIVE** money to help other people
- **CARE** for the world.

Mitzvahs make a Jewish person feel like they belong.



What should we be able to do?
 Describe Zoe as being a Jew.
 Remember something about the story of Ruth.
 Describe how Jewish people welcome babies into their community.
 Give an example of how a Jewish people might care for their world.

In PSHE we will be learning about healthy friendships, developing friendships skills and thinking about families and other special people. .



In Music, we will be focusing on the piece 'Colonel Hathi's march' from the Jungle Book. We will explore moving and counting in time to march music, composing our own marching music, listening to contrasting low and high instruments and respond to music through movement.